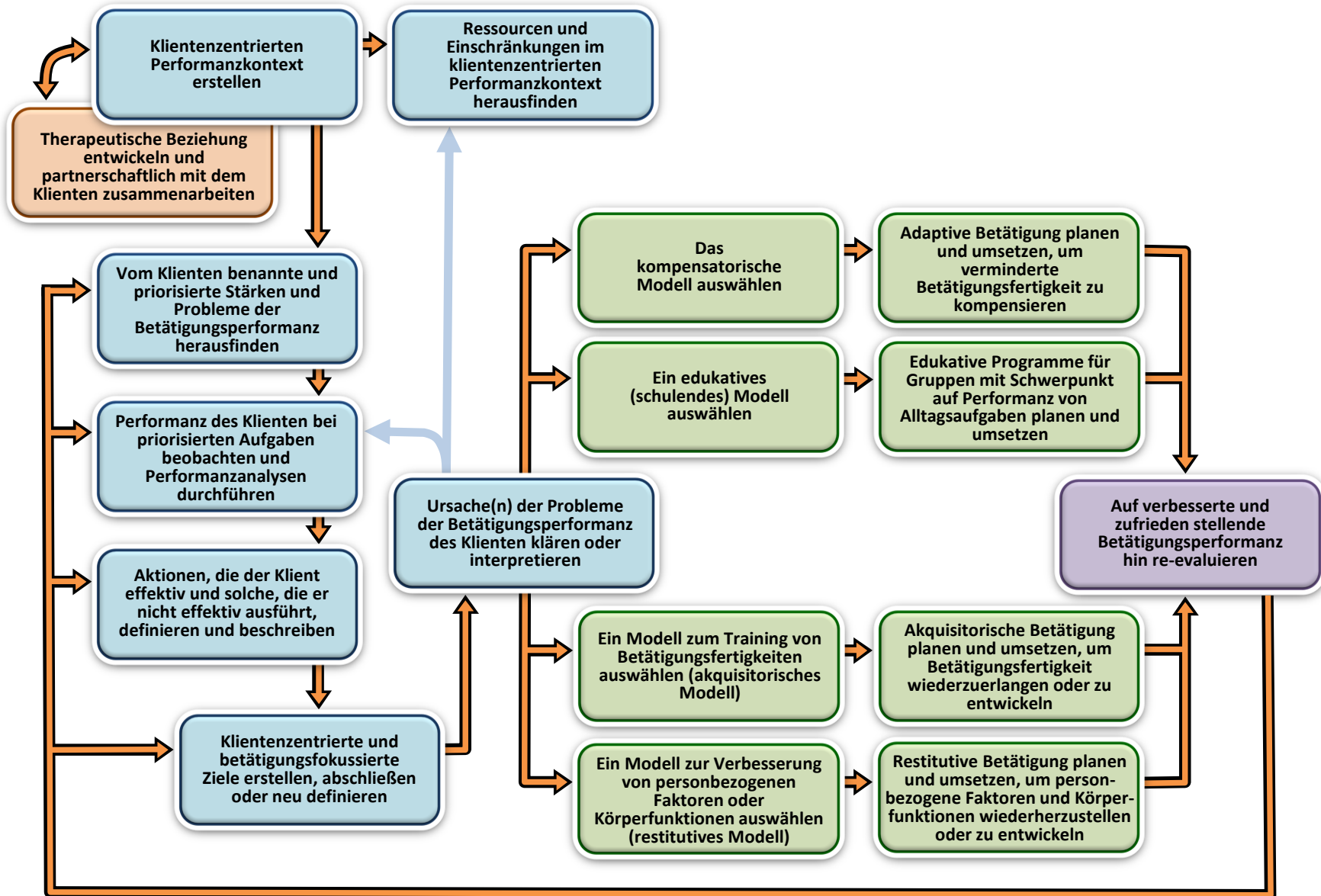


Evaluations- und Zielsetzungsphase

Interventionsphase

Re-Evaluationsphase



Übernommen aus: Fisher, A. G. (2009). *Occupational Therapy Intervention Process Model: A model for planning and implementing top-down, client-centered, and occupation-based interventions*. Fort Collins CO: Three Star Press. (Offizielle Übersetzung, angenommen Juni 2013)